

SWEETIE。甜蜜点

SWEETIE。

## Sweetie Preserved Flowers · For Florist Partnerships

Flexible Pairing · Ecommerce Solution · Low MOQ · Fast Dispatch

Sweetie Group Co.,Ltd-

THL 400-699-1221

<http://www.sweetie-group.com>

用心就很甜蜜

You Design Gift, We Deliver Gift.

SWEETIE。

SWEETIE。

**Sweetie-Group** is a flower-based company dedicated to the innovative service concept of "Flower + Everything." We specialize in the design, development, production, and sales of floral products. Our main business spans international B2B, domestic B2B, and B2C markets.

To support our long-term growth strategy and maximize the advantages of various product categories, Sweetie-Group operates factories in Kunming and Yiwu, along with offices in Suzhou, Beijing, and Tianjin.

With over 16+ years of experience in the floral gift industry, Sweetie-Group excels in staying ahead of market trends, understanding customer needs, providing professional design services, and maintaining rigorous quality control—all while delivering exceptional customer service.

Our portfolio includes partnerships with renowned brands like Dior, Lancôme, and the British Museum, as well as domestic retail stores such as Freshippo, FamilyMart. Internationally, we are a trusted supplier to major supermarkets like Gifi, AEON, Walgreens etc.

## About Sweetie

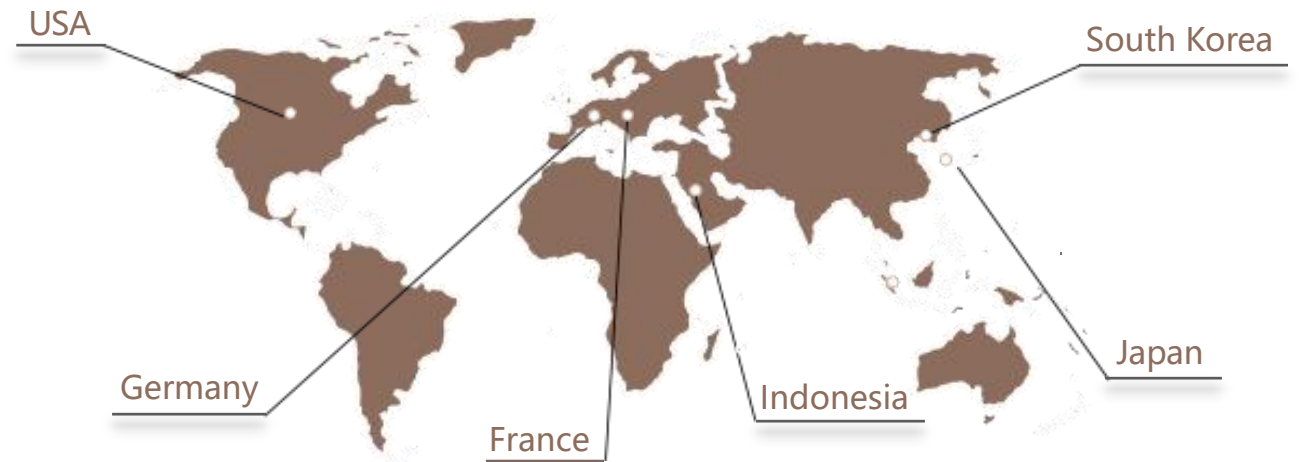


## Supply Strength & Capacity

Company and Factory



International Market





# Product Categories

Complete Product Range to Fit Your Market Needs

## Preserved Flower Gift Boxes





# Product Categories

Complete Product Range to Fit Your Market Needs

Preserved Flower in glass





# Product Categories

Complete Product Range to Fit Your Market Needs

## Eternal Rose Animal Series



## ●● Your Competitive Edge with Us ●●

<https://www.sweetie-group.com/solution/amazon-gift-product-supplier>



### JD.com Category Expertise

Over 16 years of experience supplying top-selling products in JD.com gift & floral categories, with insights into platform traffic logic and customer behavior.



### Best-Seller Product Development

Proven strategies for identifying and developing viral products: design trends, packaging, price positioning, and seasonal timing.



### Competitive Pricing Tiers

Flexible price ranges for high-volume e-commerce orders, from budget-friendly to premium SKUs, all optimized for platform algorithm favorability.



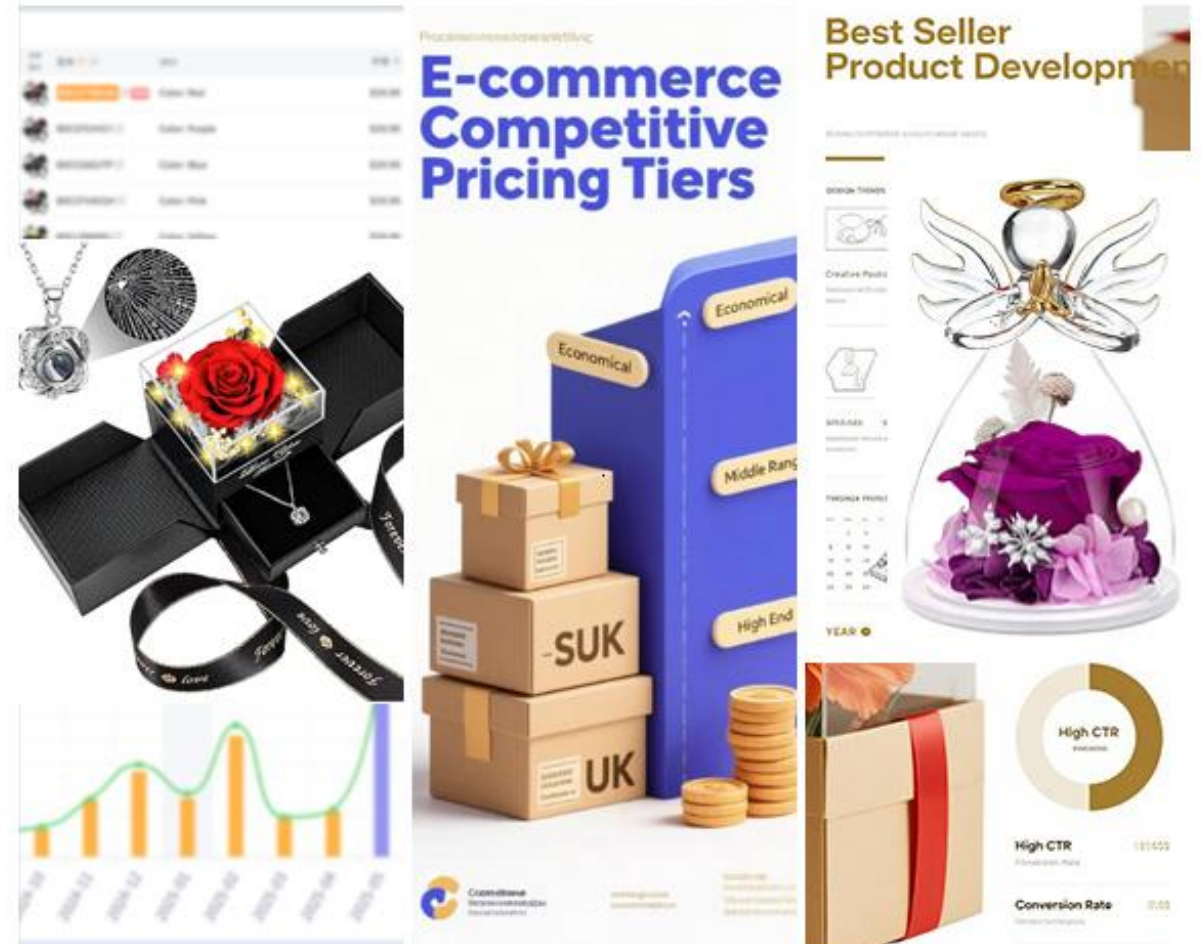
### Empowerment-Oriented Collaboration

We don't just sell—we partner. Our team helps e-commerce clients differentiate through tailored packaging, co-branded concepts, and rapid product launches.



### D2C Experience & Platform Fit

Products are tested for platform readiness: keyword-enriched copywriting, attractive photography, and A+ content adaptation available.







## ●● One-stop customized service ●●

Customer -oriented approach,diverse product offerings, and one-stop R&D and design services to meet all customization needs.

### ● Customer needs

- Identifying the customer's product customization needs and gathering relevant information

### ● Market Research

- Based on the client's requirements, we conduct preliminary research and integrate key data to better understand the desired product style, design elements, color schemes, materials, and accessories

### ● Solution Proposal

- Depending on the nature of the customized product, we offer two tailored approaches:
- \*. Product Sampling – We create a sample and send photos to the client for confirmation.
  - \*. 3D Modeling & Visual Presentation – We build a 3D model and provide a visual mock-up as part of the proposal.

### ● Product delivery & After-sales service

- After the product is manufactured, it After production, all products undergo strict quality inspection before shipment. Once the customer receives the goods, we promptly follow up to confirm delivery satisfaction and provide comprehensive after-sales support. We also collect customer feedback to further improve our products and services.

### ● Implementation plan

- Upon sample confirmation, the project is transferred from R&D to the production team, a production timeline is scheduled, and manufacturing is initiated.

### ● Client Feedback

- After receiving client feedback, we refine and enhance the original proposal based on the updated information, and present the revised version for final client approval.





# Our Advantages

Why Do Global Wholesalers Choose Sweetie?



**In-House Factories, Stable Lead Times**



**Small MOQ, Mixed SKUs Available**



**Flexible Shipping Options with Global Coverage**



**Custom Packaging, Colors, and Logo Available**



**One-Stop Sourcing: Flowers, Accessories & More**



**Trusted by Global Brands Worldwide**



Glass Dom Series Collaboration Case Study - British Museum

British Museum - Unicorn preserved flower in glass dom



Floral Material Display.



✦Floral Recipe✦  
**Main Flower:** Red Rose  
**Key Decorative Element:** Unicorn Figurine  
**Filler Flowers & Greens:** Eucalyptus Fruit, Valentine Fruit, Preserved Moss, Preserved Hydrangea, Yunnan Thistle, Apple Leaves, Baby's Breath  
**Accessories:** LED Fairy Light String, Cylindrical Glass Dome, Base Stand



Detail Display.

Encased in a glass dome, this preserved flower piece centers around a unicorn — a timeless symbol of true love, bravery, beauty, and grace. To give it is to say: "You are my one and only."



British Museum - Swan Noble Chessboard in Glass Dom

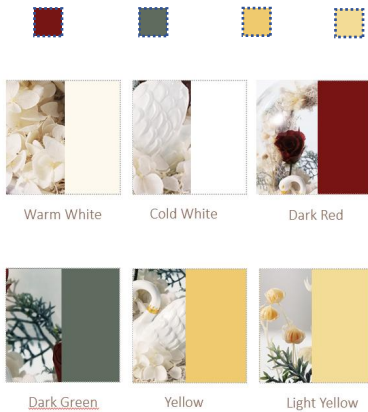


Color Coordination

Bathed in a soft, milky white palette, the design gently echoes the swan figurine at its center—complementing its form while allowing it to stand out with grace. Striking red accents weave through the composition, symbolizing passion and nobility, adding bold contrast and emotional depth. The elegant harmony of red and white speaks to timeless beauty, perfectly reflecting the theme of refined love. Subtle hints of green breathe life into the piece, infusing it with a natural, vivid atmosphere—turning stillness into poetry.



(The swan figurine is provided by the client)



Detail Display

Encased in a glass dome, this preserved flower piece features a swan figurine inspired by 19th-century British royal emblems. With a golden crown resting around its neck, the swan gracefully symbolizes purity, quiet strength, and aristocratic charm.





# Flower + Jewelry Cooperation Case Showcase - Pandora - Eternal Love Flower Box Creative Solution

## PANDORA - Eternal LOVE Flower Box Creative Solution Customization Process

### Design concept:

**Main flower:** pink rose  
**Pink rose flower language:** I love you, first love  
**Design inspiration:**  
Pink rose is scientifically known as rose of Rosaceae, also known as Diana rose. This preserved flower ball uses pink rose and Austin rose as the main flowers, with auxiliary flowers such as love fruit and baby's breath, highlighting the main position of pink rose, implying beautiful and pure love. The whole flower ball is decorated with small scented needles and silk ribbons, making it more delicate.



### Floral Material Display.

#### Flower Box Meaning

The "Eternal Love" Limited Edition Flower Box symbolizes deep affection and cherished bonds, beautifully expressing the meaning of everlasting love.

#### Color Palette

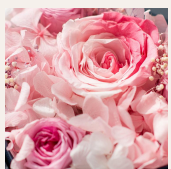
Based on the client's requirements and the product's Valentine's Day (2.14) theme, pink was chosen as the main color. It aligns with the overall tone of the product while also symbolizing romance, sweetness, and beauty—perfectly matching the product's dreamy and delicate aesthetic.

#### Floral Selection

In line with the color palette of the bracelet accessory and the theme of deep affection, the arrangement features preserved pink roses as the focal flower, complemented by hydrangeas and mountain ferns. The pink rose symbolizes pampering and tenderness, while the preserved rose—unfading over time—embodies eternal love, making it a perfect fit for the romantic tone of the Valentine's Day campaign.



### Color Coordination.



#### Meaning of Pink

The soft pink tone feels fresh and natural, perfectly aligned with the romantic atmosphere of Qixi Festival. It reflects the product's sweet and tender character—an ideal color for expressing love and affection during this special occasion.



#### Meaning of Nude Pink

Nude pink reflects the soft, gentle tones of the golden ball and mountain fern. Delicate and warm, it conveys a sense of tenderness and subtle elegance.



#### Meaning of Rose Red

As one of the classic shades of rose, rose red carries a vivid and pure brightness that creates a dreamy, feminine atmosphere. It exudes a subtle yet captivating charm, evoking elegance and allure.



#### Meaning of White

White, reflected in the hydrangea and cedar elements, symbolizes purity and sincerity. It brings a sense of calm, honesty, and timeless elegance to the overall arrangement.

### Floral Material Display.



**Main Flowers:** Pink Rose Pink-to-White Gradient Rose

**Filler Flowers & Greens:** Deep Pink Hydrangea Light Pink Hydrangea White Hydrangea Mountain Fern Golden Ball (Light Pink)



Pink Rose



Craspedia



Mountain Fern



White & Pink Hydrangea



Pink-to-White Gradient Rose

### Finished product display.





## Seasonal Festival Products-Halloween







HAPPY VALENTINE'S DAY =

# 2.14 挚爱情人 幸福摩天轮秀

奢/华/永/生/花/摆/件/合

永生花器搭摩天轮大号亚克力礼盒-粉色

永生花器搭摩天轮小号-白色  
永生花器搭摩天轮小号-紫色  
永生花器搭摩天轮大号-蓝色  
永生花器搭摩天轮大号-紫色

永生花器搭摩天轮-白色  
永生花器搭摩天轮-紫色  
永生花器搭摩天轮-蓝色  
永生花器搭摩天轮-黄色

SWEETIE. 甜蜜点

同心 新婚 纪念

**SWEETIE。甜蜜点**  
用心烘焙时光





## Seasonal Festival Products-Christmas Day





## BUSINESS PARTNERS AND SERVED CLIENTS



DIOR



LANVIN



LANCÔME  
PARIS

The British  
Museum

AEON



Walgreens





# SWEETIE.♡

SWEETIE-GROUP

<https://www.sweetie-group.com/>